

CITY OF ALLENTOWN

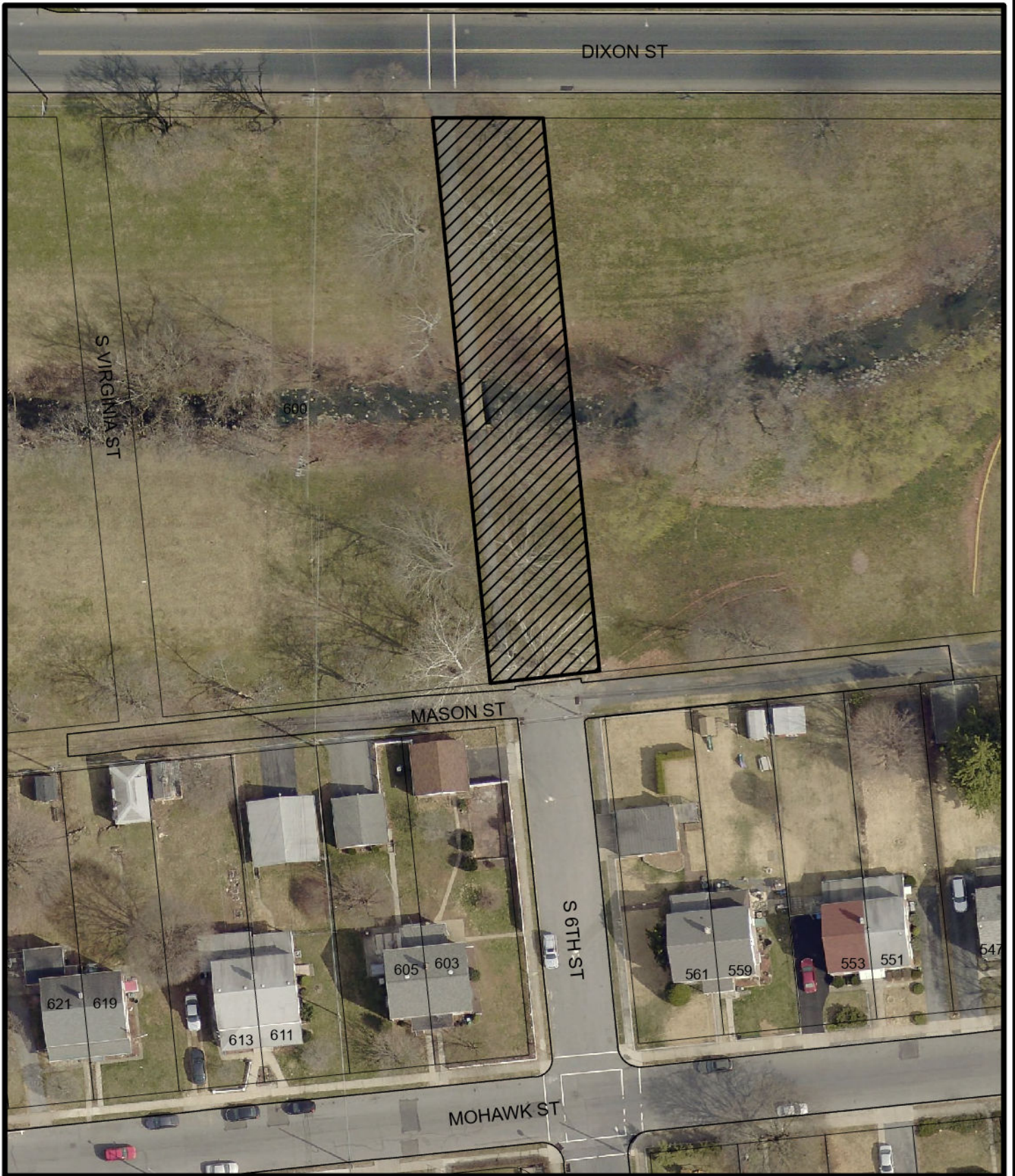


Proposed Street Vacation
S 6th Street
From Mason Street to Dixon Street

SCALE:
1" = 60'



CITY OF ALLENTOWN

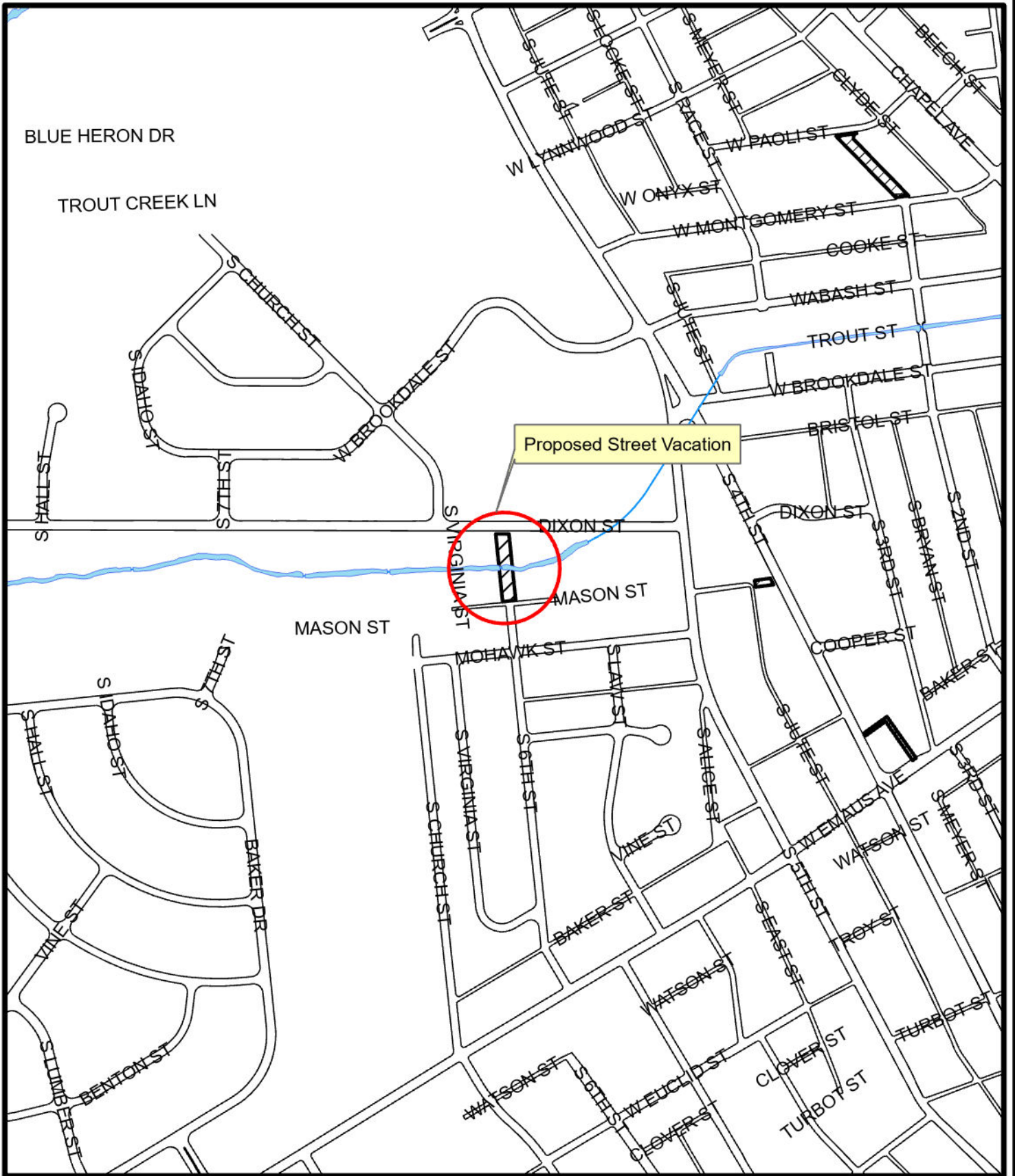


Proposed Street Vacation
S 6th Street
From Mason Street to Dixon Street

SCALE:
1" = 60'



CITY OF ALLENTOWN



Proposed Street Vacation
S 6th Street
From Mason Street to Dixon Street

SCALE:
1" = 500'

