



**REDEVELOPMENT
AUTHORITY**

12 Criteria of Blight - 1712.1 Urban Redevelopment Law (a parcel needs to meet one or more of the below criteria)

1. A premises because of its physical condition is declared a **“Public Nuisance”** as per local housing codes.
2. A premises because of its physical condition is considered an **“Attractive Nuisance”** to children such as unsafe structures, basements or fences.
3. A dwelling that it dilapidated, unsafe lacking equipment necessary per housing code and **“Tagged Unfit”**.
4. A structure that is a **“Fire Hazard”** and dangerous to the safety of persons or property.
5. A structure **“Lacking Utilities”** plumbing, heating or other facilities.
6. A Vacant **“Unapproved Parcel of Ground”** which has is neglected and has been a place for debris or rodents.
7. An occupied property that has been **“Tax Delinquent for 2 years”**.
8. A property which has **“Not Been Rehabilitated with in 1 year of Notice to Rehabilitate”** from the code enforcement agency.
9. An **“Abandoned Property”**.
10. A property that has **“Defective or Unmarketable Title”**.
11. A property which has **“Environmentally Hazardous Conditions”**.
12. A property having **“3 or more of these characteristics”**; (i) doesn't meet current use, occupancy or fire codes; (ii) unsafe accessways; (iii) being served by an unsafe street or right of way; (iv) violates property maintenance codes; (v) is vacant; (vi) is located in density area of at least 1k person per sq mile, or with more the 90% of the units being non residential.



39 S. 13th Street

Blight Criteria 1, 2, 7, 8, 9, 10 & 12



107 – 109 S. 8th Street

Blight Criteria 1, 2, 3, 9 & 12



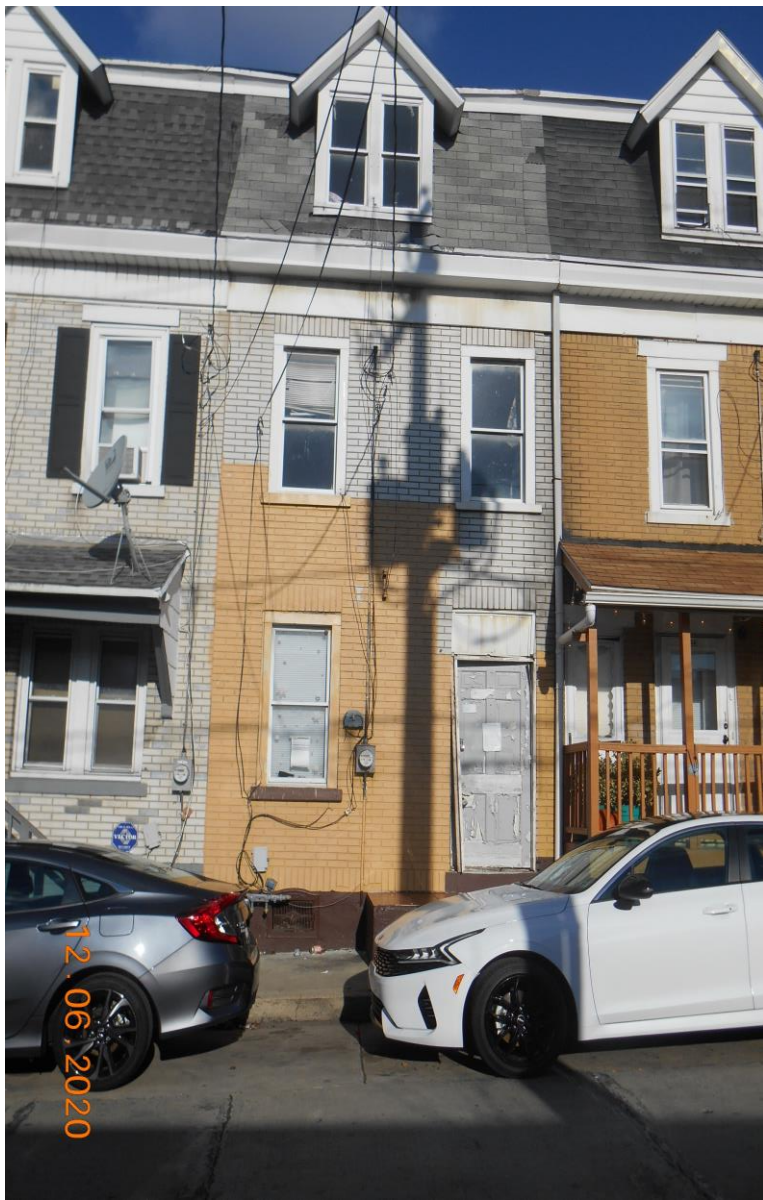
126 N. College Street
Blight Criteria 1, 2, 3, 5, 9, & 12



127 S. Saint Cloud Street
Blight Criteria 1, 2, 3, 5 & 12



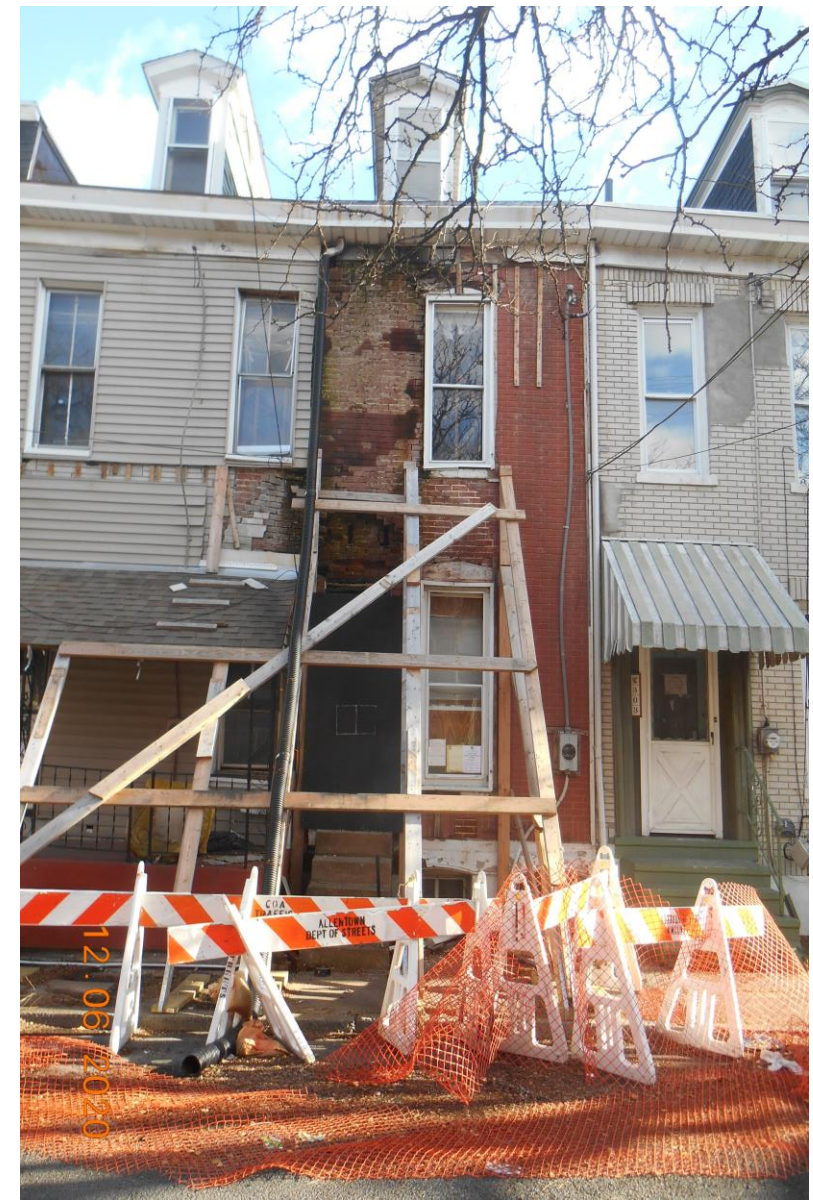
224-226 S. Carlisle Street
Blight Criteria 1, 2, 3, 5 & 12



225 W. Court Street
Blight Criteria 1, 2, 3, 8, 9 & 12



246 E. Maple Street
Blight Criteria 1, 2, 3, 5, 8 & 12



305 N. Jordan Street
Blight Criteria 1, 2, 3, 4, 7, 10 & 12



419 N. 4th Street
Blight Criteria 1, 2, 4, 7, 8 & 9



419 N. 6th Street
Blight Criteria 1, 2, 3, 5, 9 & 12



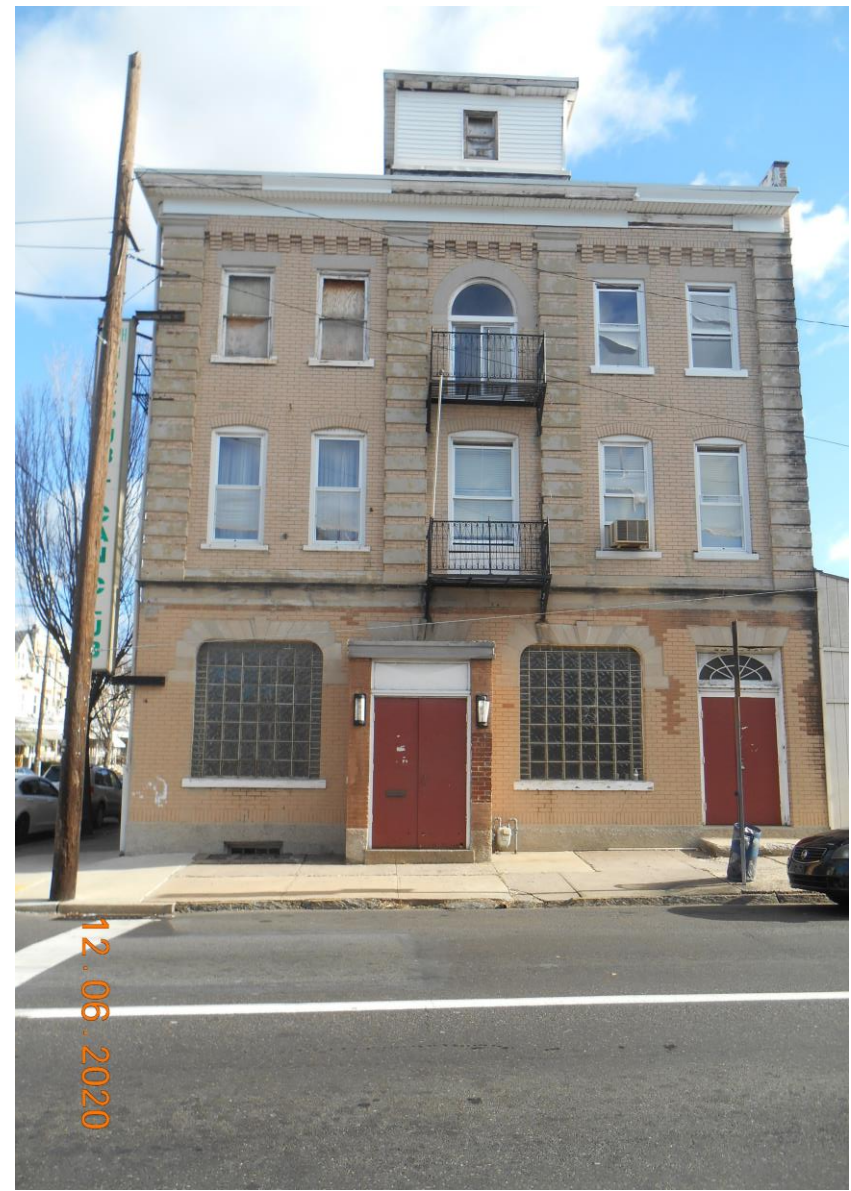
422.5 N. 4th Street
Blight Criteria 1, 2, 3, 5, 10 & 12



430 N. Penn Street
Blight Criteria 1, 2, 8 & 12



516 N. 18th Street
Blight Criteria 1, 2, 5 & 12



639-645 N. 8th Street
Blight Criteria 1, 2 & 12



732 W. Tilghman Street

Blight Criteria 1, 2, 3, 9 & 12



801 N. 4th Street

Blight Criteria 1, 2, 3, 5 & 12



824 N. 5th Street

Blight Criteria 1, 2, 3, 5, 7, 9, 11 & 12



926 W. Liberty Street
Blight Criteria 1, 2, 3, 5 & 12



1134 Walnut Street
Blight Criteria 1, 2, 8, 9, 12