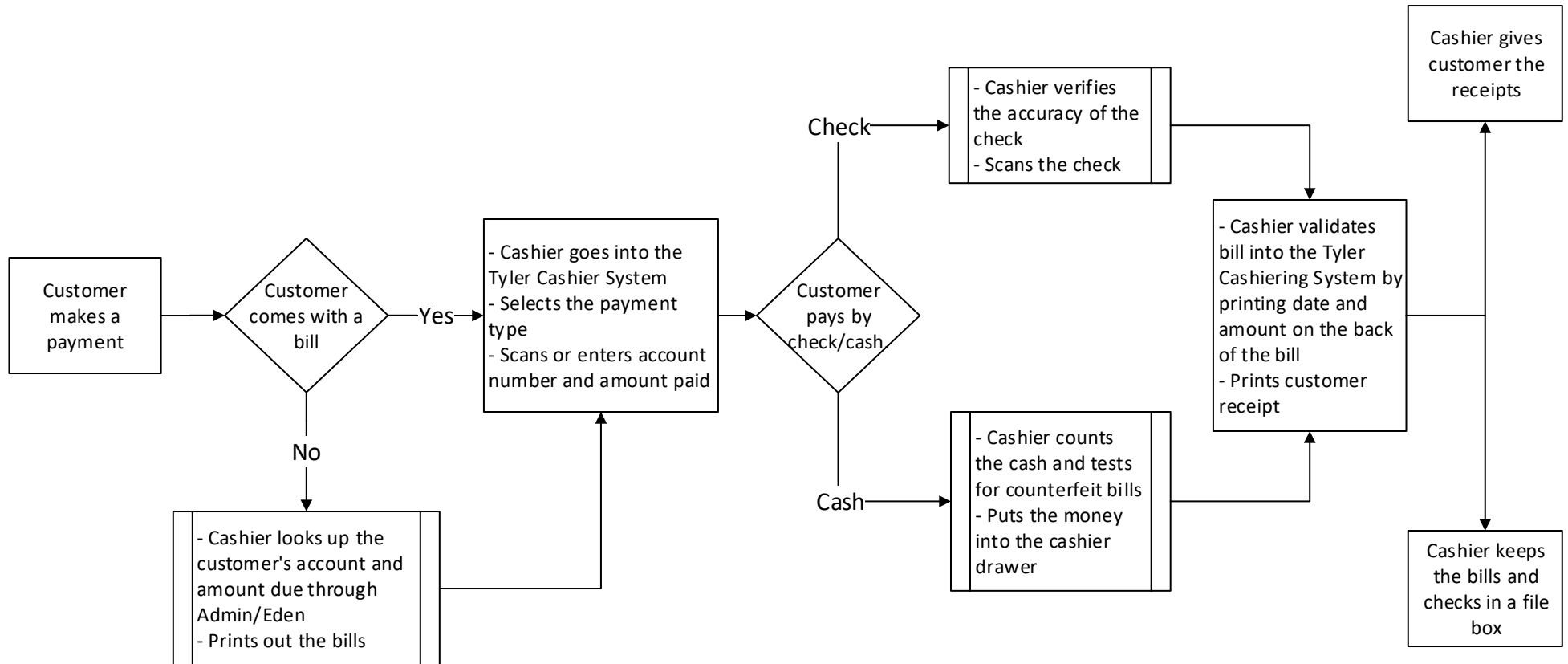
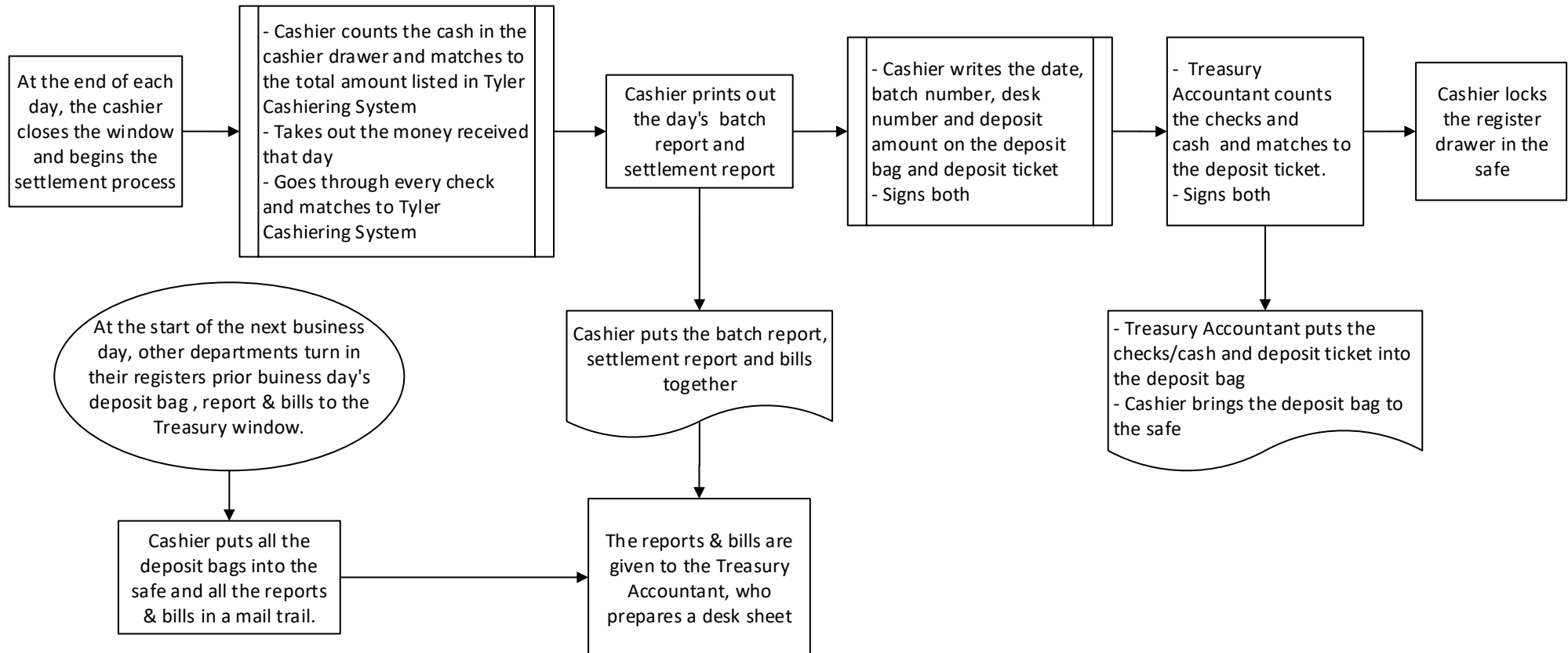


## City of Allentown: Process Flow - Treasury Treasury Cashier Window

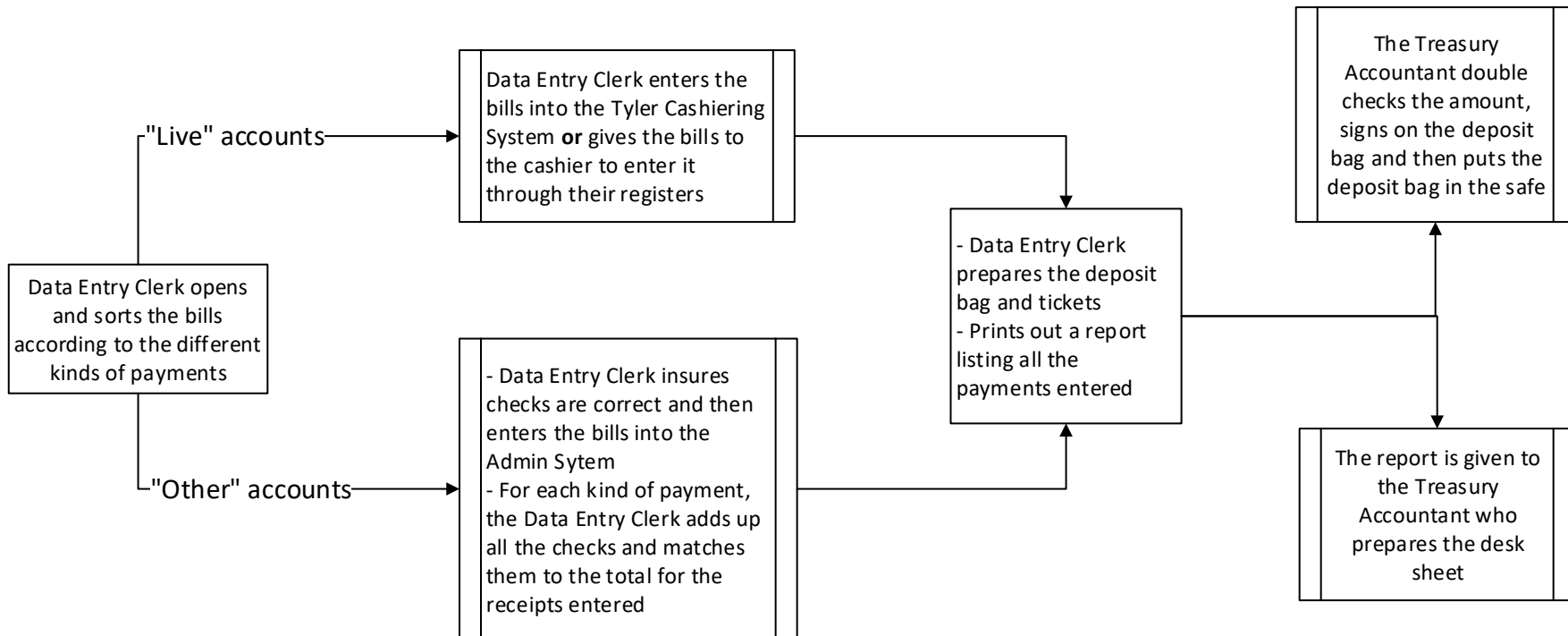


## City of Allentown: Process Flow - Treasury End of Day Process

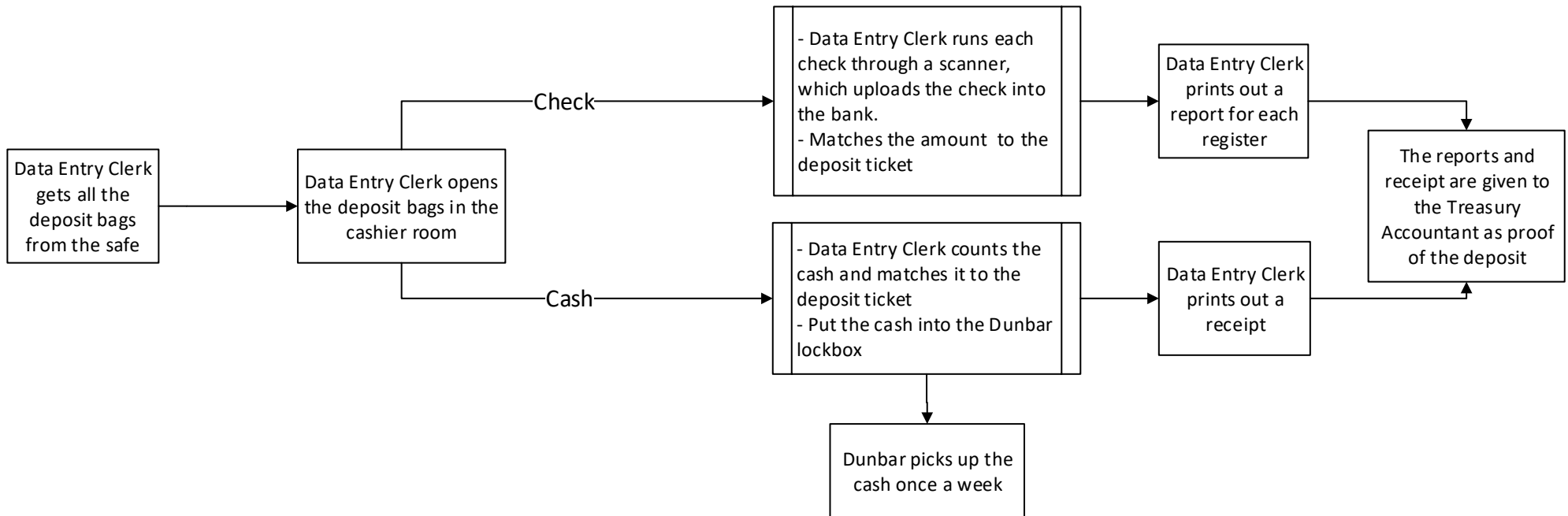


## City of Allentown: Process Flow - Treasury Register 9

When large volume of mail are received, it is more efficient to enter the payments directly into the Admin System.



## City of Allentown: Process Flow - Treasury Data Entry



## City of Allentown: Process Flow - Treasury Data Entry(continued)

