

ADA REMEDIATION PLANS

FOR

WELLS FARGO BANK, N.A.

WF #141576 (TILGHMAN STREET OFFICE)

PARCEL #55544312769902

702 NORTH 7TH STREET

CITY OF ALLENTOWN, LEHIGH COUNTY, PENNSYLVANIA

SCHEDULE OF QUANTITIES:

ITEM #	DESCRIPTION	QUANTITY	UNIT
1	FULL DEPTH ASPHALT REPLACEMENT (1 1/2" HMA SURFACE COURSE, 2" HMA BASE COURSE; 4" DGA SUBBASE)	1,348	SF
2	CONCRETE SIDEWALK (4" THICK)	237	SF
3	CONCRETE CURB	21	LF
4	HANDICAP PARKING SIGNAGE W/VAN ACCESSIBLE PLACARD	1	EA
5	TRUNCATED DOME	1	EA
6	STRIPING/PAVEMENT MARKINGS	1	LS
7	BOLLARD	3	EA
8	CONCRETE WHEELSTOP	11	EA
9	HANDICAP RAMP/LANDING	227	SF
10	CONCRETE STEP	1	LS
11	ALUMINUM HANDRAIL	33	LF
12	ADJUST METAL GUIDERAIL	1	LS



AERIAL MAP
SCALE: NTS

SHEET INDEX

COVER SHEET	1 OF 7
PROJECT NOTES	2 OF 7
SITE PLAN SHEET 'A'	3 OF 7
SITE PLAN SHEET 'B'	4 OF 7
GRADING PLAN	5 OF 7
DETAIL SHEET	6 OF 7
DETAIL SHEET	7 OF 7

NorthStarDesign LLC
CIVIL & CONSULTING ENGINEERS

PHONE: 908-668-3499 FAX: 908-668-3291
361 ROUTE 31, BLDG E, SUITE 1402
FLEMINGTON, NEW JERSEY 08822
WWW.NORTSTARDESIGNLLC.COM

REV.	DATE	REVISION COMMENT	BY:

ADA
REMEDICATION PLAN
WELLS FARGO BANK
PARCEL #55544312769902, WF PROJECT #141576
702 NORTH 7TH STREET
CITY OF ALLENTOWN
LEHIGH COUNTY, PENNSYLVANIA

W. C. VIOLA, Jr.
PROFESSIONAL ENGINEER
PA LICENSE No. 071914

SHEET TITLE:
COVER SHEET

SHEET NO.:
1 OF 7

DESIGN DATE: 12/07/17
DRAWN BY: DG
CHECKED BY: WCV
DRAWING SCALE: As Shown
PROJECT #: 17-01710
CAD FILE: 17-01710SS00

REV 0	12/07/17
-------	----------

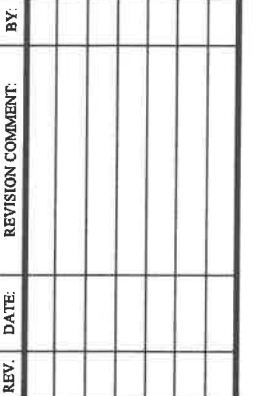
[H]

- D

- U

B

- A



W. C. VIOLA, Jr.
4/11/14
PROFESSIONAL ENGINEER
PA LICENSE No. 078914

SHEET NO.: 2

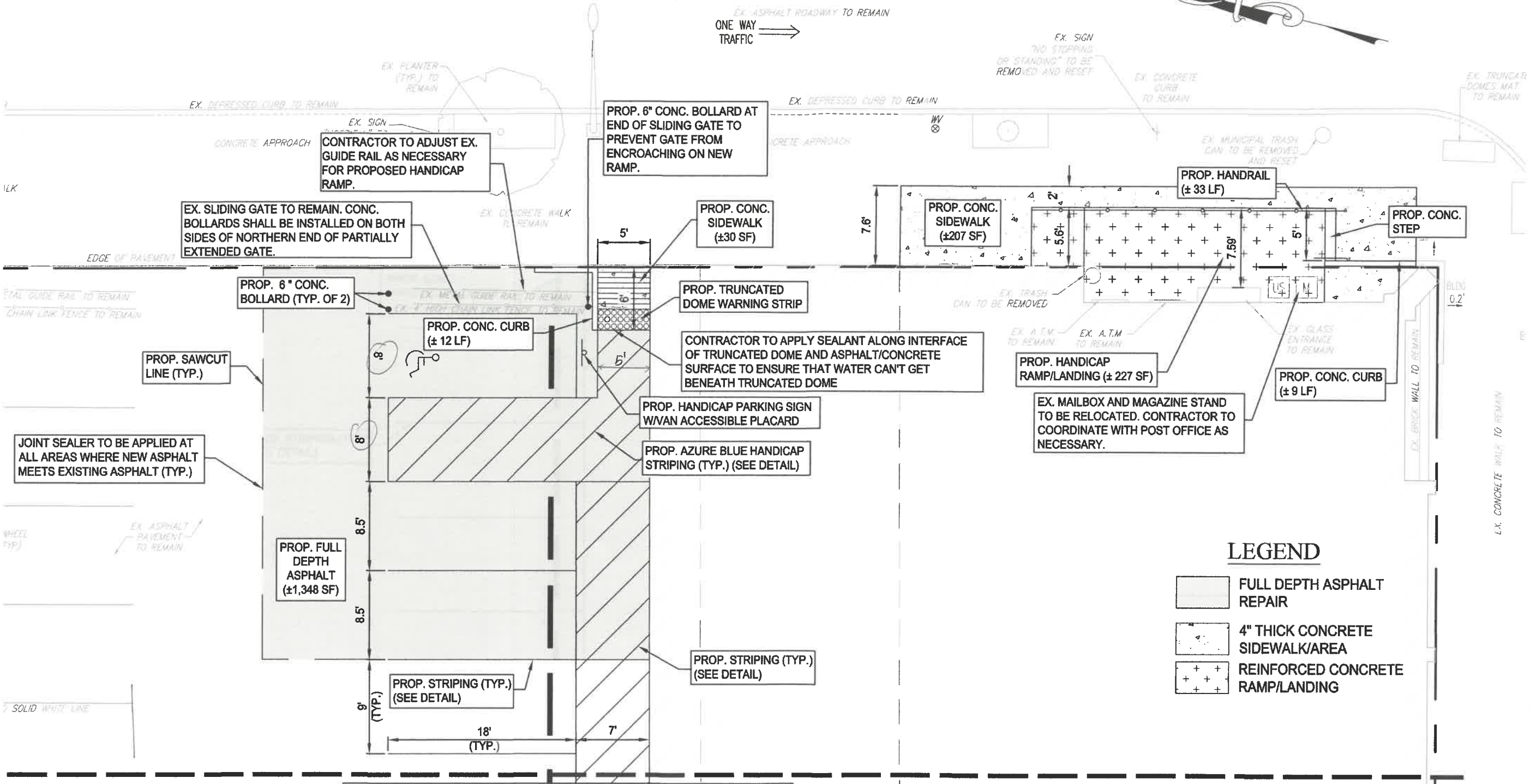
DESIGN DATE: 12/07/17
DRAWN BY: DG
CHECKED BY: WCV
DRAWING SCALE: As Shown
PROJECT #: 17-017.10
PLOT FILE: 17-01710SD00

EV 0	12/07/17
------	----------

NORTH 7TH STREET

(80' WIDE R.O.W.)(PUBLIC ROADWAY)

ONE WAY
TRAFFIC



LEGEND

- FULL DEPTH ASPHALT REPAIR
- 4" THICK CONCRETE SIDEWALK/AREA
- REINFORCED CONCRETE RAMP/LANDING

GRAPHIC SCALE



(IN FEET)
1 inch = 10 ft.

NOTE:

- ALL SITE FEATURES HAVE BEEN DEPICTED BASED ON A BOUNDARY & TOPOGRAPHIC SURVEY PREPARED BY BLUE MARSH ASSOCIATES, INC DATED 11/02/17.
- REFER TO ADDITIONAL NOTES LOCATED ON SHEET 2 OF THIS SET, PROJECT NOTES.
- ALL EXISTING FEATURES SHALL BE REMOVED AND DISPOSED OF WHERE PROPOSED IMPROVEMENTS ARE DEPICTED IN THE SAME LOCATION. ALL OTHER EXISTING FEATURES ARE TO REMAIN UNLESS SPECIFICALLY IDENTIFIED OTHERWISE.

CALL BEFORE YOU DIG!
PENNSYLVANIA LAW REQUIRES
3 WORKING DAYS NOTICE FOR
CONSTRUCTION PHASE AND 10 WORKING
DAYS IN DESIGN STAGE - STOP CALL

PA 1
SYSTEM, INC.
1-800-242-1776

North Star Design LLC
CIVIL & CONSULTING ENGINEERS
PHONE: 908-968-3499 FAX: 908-968-3291
361 ROUTE 31, BLDG E, SUITE 1404
HARRINGTON, NEW JERSEY 08522
WWW.NORTSTARDESIGNLLC.COM

REV.	DATE	REVISION COMMENT	BY

**ADA
REMEDATION PLAN**
WELLS FARGO BANK
PARCEL #55544312769902, WF PROJECT #141576
702 NORTH 7TH STREET
CITY OF ALLENTOWN
LEHIGH COUNTY, PENNSYLVANIA

W. C. VIOLA, Jr.
PROFESSIONAL ENGINEER
PA LICENSE No. 078914


SHEET TITLE:
**SITE
PLAN
SHEET 'A'**

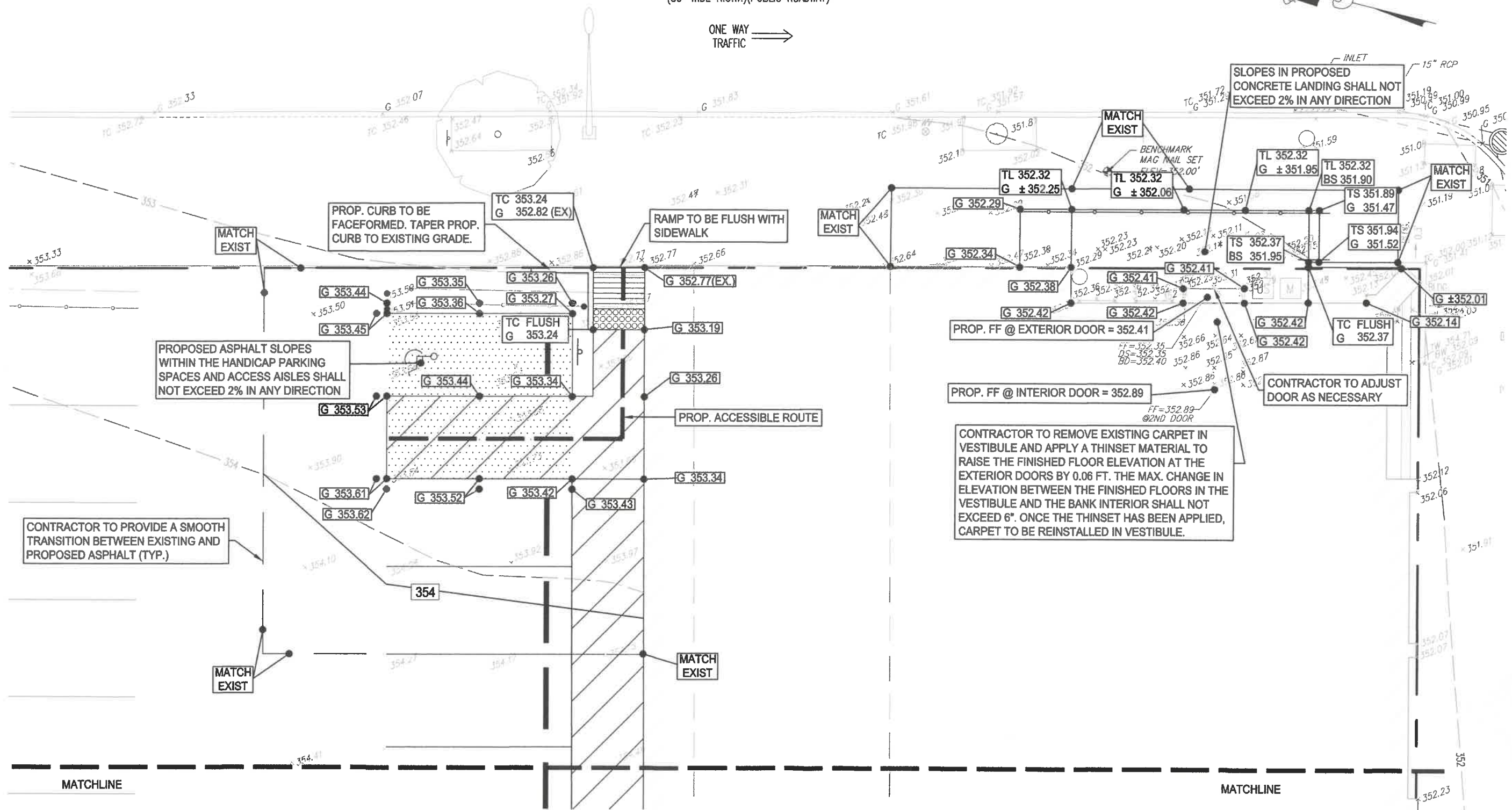
SHEET NO.:
**3
OF 7**

DESIGN DATE: 12/07/17
DRAWN BY: DG
CHECKED BY: WCV
DRAWING SCALE: As Shown
PROJECT #: 17-01710SS00
CAD FILE:

REV 0 **12/07/17**

(80' WIDE R.O.W.)(PUBLIC ROADWAY)

ONE WAY
TRAFFIC 



PENNSYLVANIA LAW REQUIRES
3 WORKING DAYS NOTICE FOR
CONSTRUCTION PHASE AND 10 WORKING
DAYS IN DESIGN STAGE - STOP CALL



(IN FEET)
1 inch = 10 ft.



NorthStarDesign, LLC
CIVIL & CONSULTING ENGINEERS

361 ROUTE 31, BLDG E, SUITE 1404
FLEMINGTON, NEW JERSEY 08822
WWW.NORTHSTARDESIGNLLC.COM

[illegible]

ADA
REMEDATION PLAN
WELLS FARGO BANK
PARCEL #55544312769902, WF PROJECT #141576
702 NORTH 7TH STREET
CITY OF ALLENTOWN
LEHIGH COUNTY, PENNSYLVANIA

W. C. VIOLA, Jr.

PROFESSIONAL ENGINEER
PA LICENSE No.078914

SHEET TITLE:

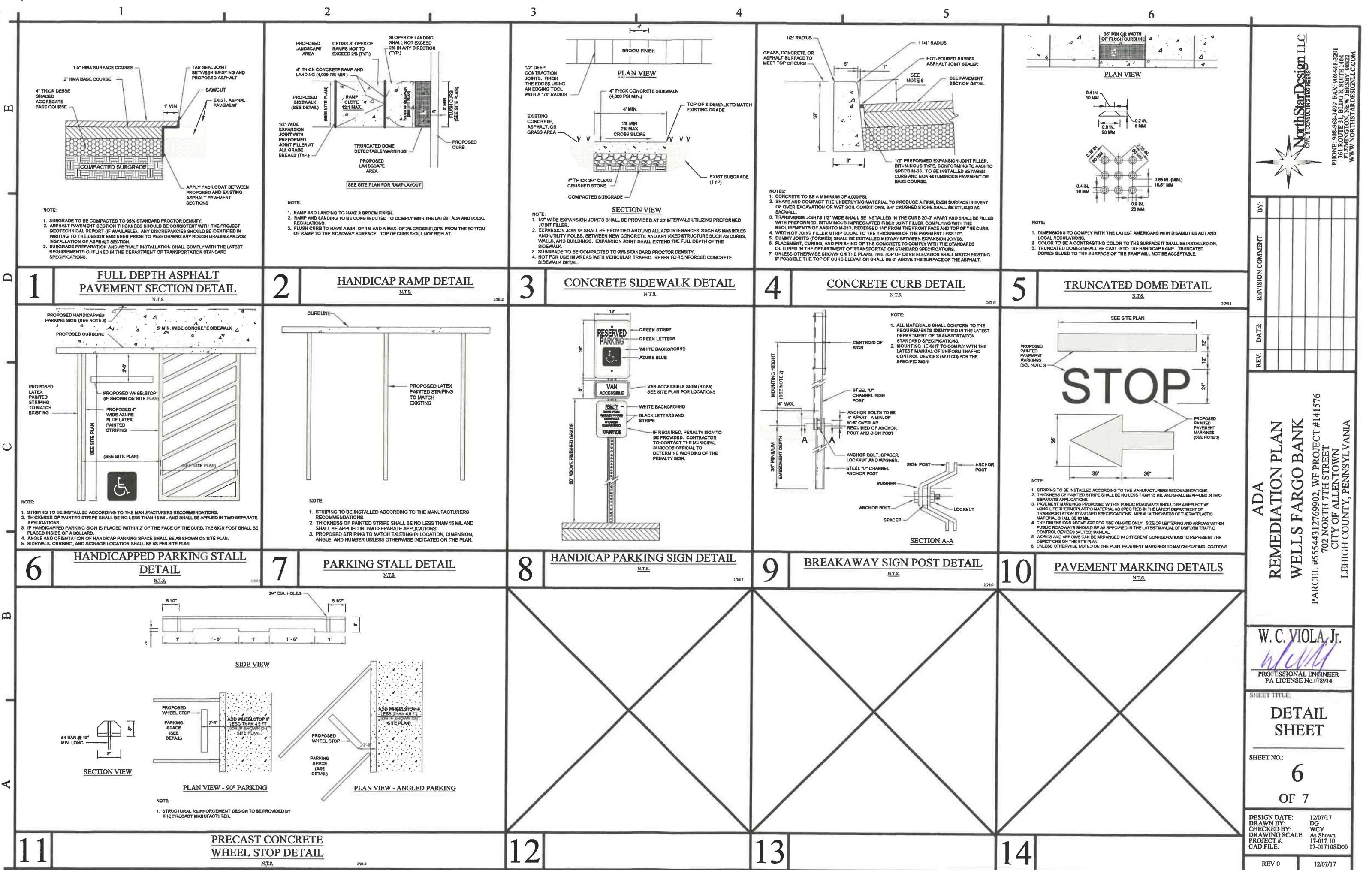
GRADING PLAN

SHEET NO.:

5
OF 7

DESIGN DATE: 12/07/17
DRAWN BY: DG
CHECKED BY: WCV
DRAWING SCALE: As Shown
PROJECT #: 17-017.10
CAD FILE: 17-01710SS00

REV 0	12/07/17
-------	----------



NorthStarDesign LLC
CIVIL & CONSULTING ENGINEERS

PHONE: 908-968-4469 FAX: 908-968-3291
361 ROUTE 31, BLDG E SUITE 1402
FLEMINGTON, NEW JERSEY 08822
WWW.NORTHSTARDESIGNLLC.COM

REV.	DATE	REVISION COMMENT

ADA
REMEDATION PLAN
WELLS FARGO BANK
PARCEL #55544312769902, WF PROJECT #141576
702 NORTH 7TH STREET
CITY OF ALLENTOWN
LEHIGH COUNTY, PENNSYLVANIA

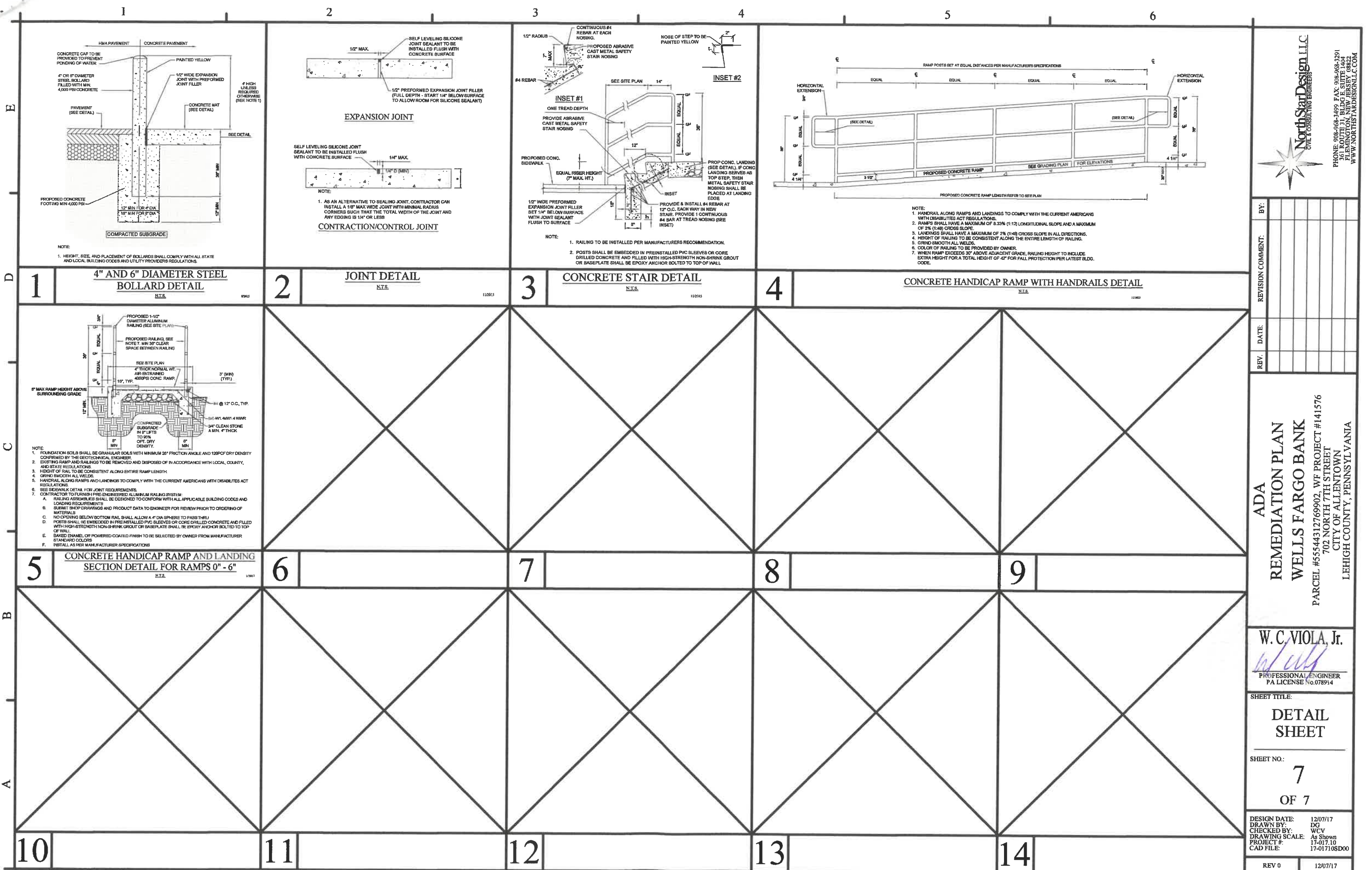
W. C. VIOLA, Jr.
PROFESSIONAL ENGINEER
PA LICENSE NO. 078914

SHEET TITLE:
DETAIL SHEET

SHEET NO.:
6
OF 7

DESIGN DATE: 12/07/17
DRAWN BY: DG
CHECKED BY: WCV
DRAWING SCALE: As Shown
PROJECT #: 17-017.10
CAD FILE: 17-01710SD00

REV 0 12/07/17





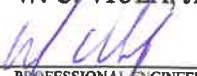
NorthStarDesign LLC
CIVIL & CONSULTING ENGINEERS

PHONE: 908-968-3400 FAX: 908-968-3291
161 ROUTE 21 SOUTH
FLEMINGTON, NEW JERSEY 08822
WWW.NORTHSTARDESIGNLLC.COM

REV.	DATE	REVISION COMMENT	BY:

ADA
REMEDATION PLAN
WELLS FARGO BANK

PARCEL #55544312769902, WF PROJECT #141576
702 NORTH 7TH STREET
CITY OF ALLENTOWN
LEHIGH COUNTY, PENNSYLVANIA

W. C. VIOLA, Jr.

PROFESSIONAL ENGINEER
PA LICENSE No. 078914

SHEET TITLE:
DETAIL SHEET

SHEET NO.:
7
OF 7

DESIGN DATE: 12/07/17
DRAWN BY: DG
CHECKED BY: WCV
DRAWING SCALE: As Shown
PROJECT #: 17-017.10
CAD FILE: 17-01710SD00

REV 0 12/07/17