

LEGAL DESCRIPTION

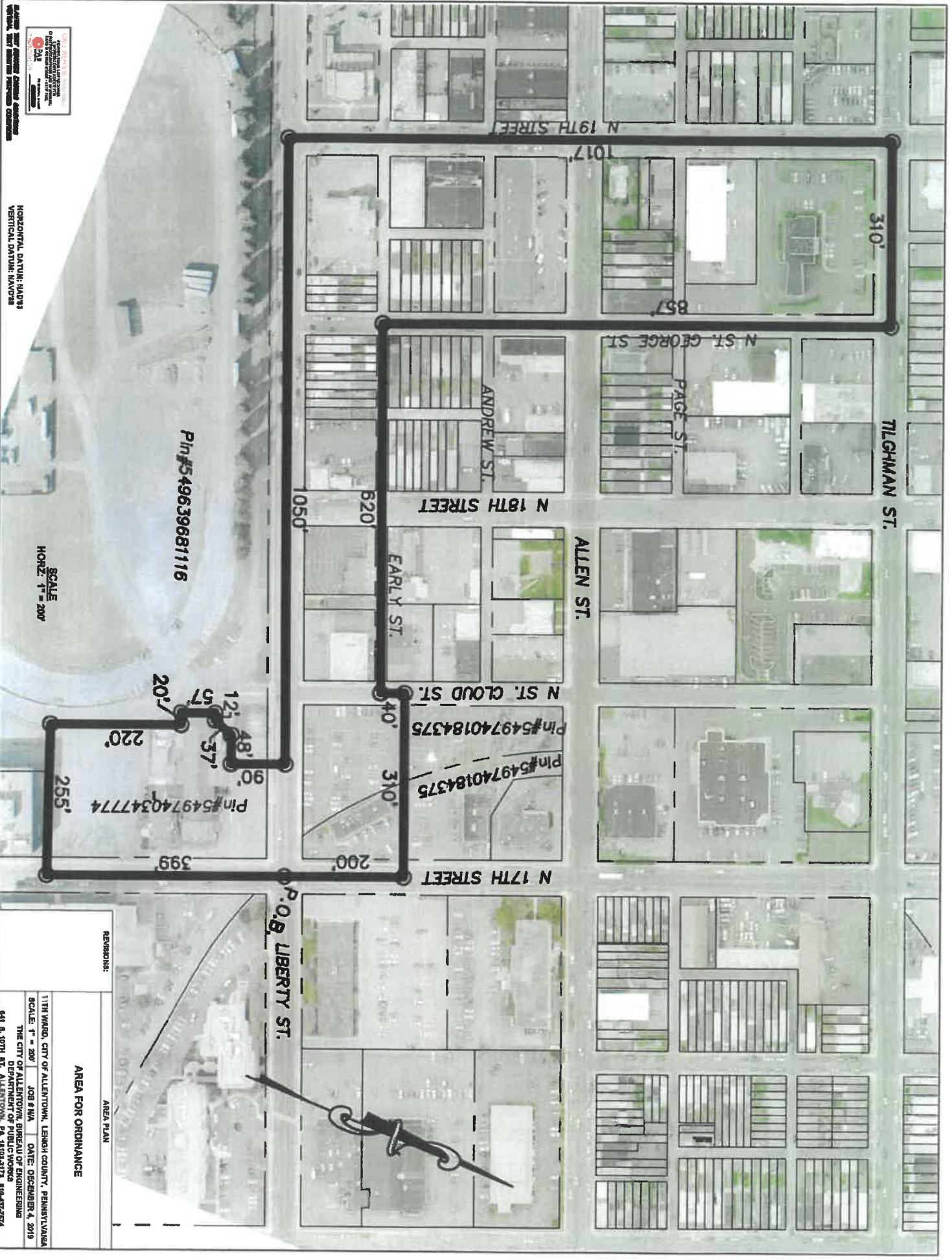
ALL that certain area being situated being in the 11th Ward of the City of Allentown, Lehigh County, PA and being bounded and described as follows;

BEGINNING at a point at the centerline intersection of Liberty Street and N 17th Street, thence FROM THE PLACE OF BEGINNING along the centerline of N 17th Street in a southerly direction for a distance of 399' more or less to a point being the Southeast corner of this described area, thence through the right-of-way of N 17th street, along CountyPin#549740516103, County Pin#549639681116 and County Pin#549740347774 in a westerly direction for distance of 255' more or less to a point ; thence along County Pin#549639681116 the following (7)courses and distances:

- 1) In a northerly direction for a distance of 220' more or less to a point; thence
- 2) In a westerly direction for a distance of 20' more or less to a point; thence
- 3) In a northerly direction for a distance of 57' more or less to a point; thence
- 4) In a easterly direction for a distance of 12' more or less to a point; thence
- 5) In a northeasterly direction for a distance of 37' more or less to a point; thence
- 6) In a easterly direction for a distance of 48' more or less to a point; thence
- 7) In a northerly direction for a distance of 90' more or less to a point on the centerline line of Liberty Street; thence along the centerline of Liberty Street in a westerly direction for a distance of 1,050' more or less to the centerline intersection of Liberty Street and N 19th Street; thence along the centerline of N 19th Street in a northerly direction for a distance of 1017' more or less to the centerline intersection of N 19th Street and Tilghman Street; thence along the centerline of Tilghman Street in a easterly direction for distance of 310' more or less to the centerline intersection of Tilghman Street and N St. George; thence along the centerline of N St. George Street in a southerly direction for a distance of 857' more or less to a point at the centerline intersection of N St. George Street and Early Street; thence along the centerline of Early Street in a easterly direction for a distance of 620' more or less to the centerline intersection of Early Street and N. St. Cloud Street; thence along the centerline of N St. Cloud Street in a northerly direction for a distance of 40' more or less to a point; thence through the right-of-way of N St. Cloud Street, County Pin #549740184375, County Pin #549740293146, through the N 17th street right-of-way, in a line being 200' north of and parallel of of the centerline of Liberty Street in a easterly direction for a distance of 310' more or less to point on the centerline of N 17th Street; thence along the centerline N 17th Street in a southerly direction for a distance of 200' more or less to the place of beginning.

CONTAINING 13.15 acres more or less.





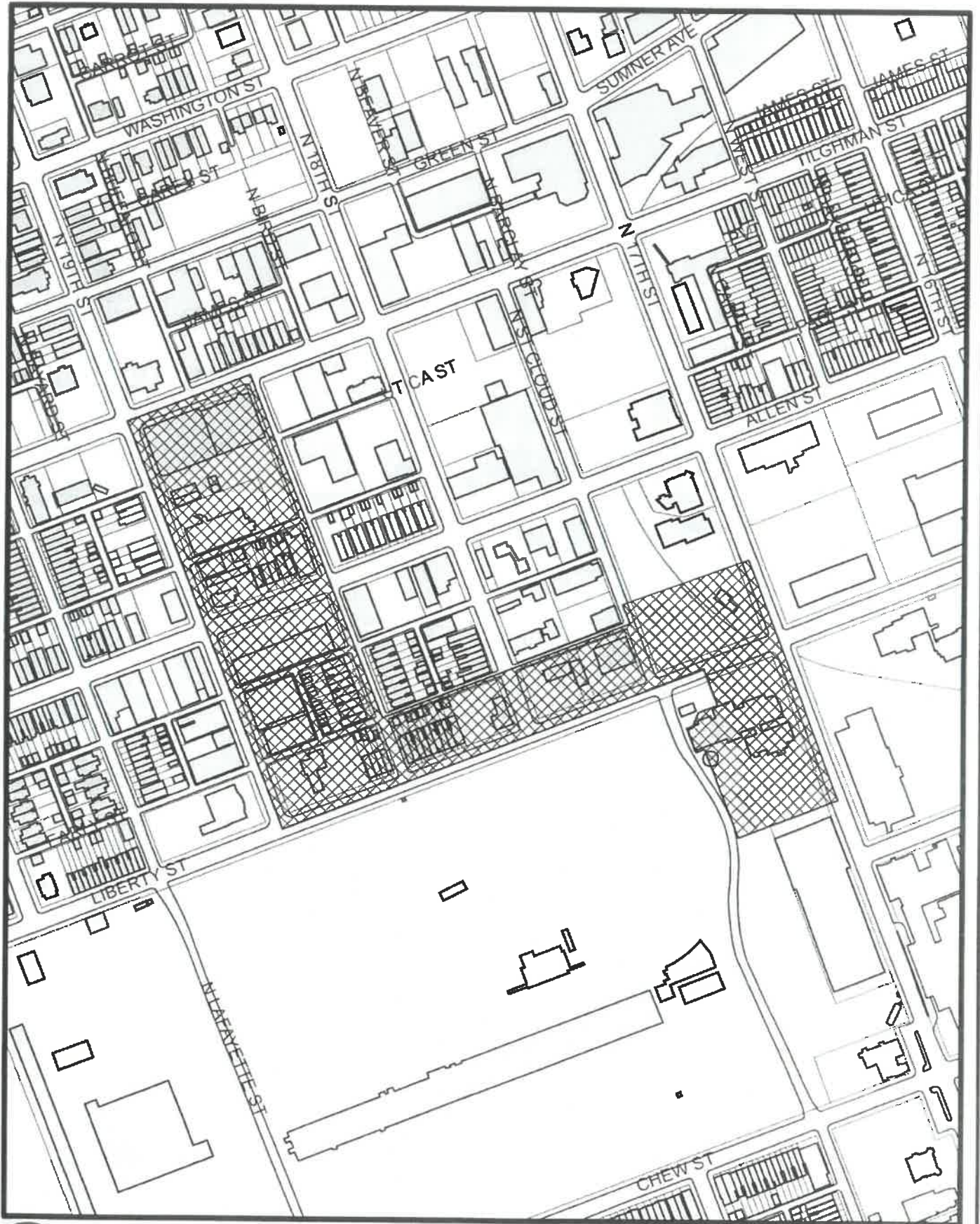
HORIZONTAL DATUM: NAD83
 VERTICAL DATUM: NAVD83

SCALE
 HORZ. 1" = 200'
 Pinned: 549639681116

255'
 399'
 220'
 20'
 57'
 12'
 48'
 90'
 57'
 Pin#549740347774
 Pin#549740184375
 Pin#549740184375
 40'
 310'
 200'
 N 17TH STREET
 N ST. CLOUD ST.
 EARLY ST.
 N 18TH STREET
 ANDREW ST.
 620'
 1050'
 310'
 N 19TH STREET
 1017'
 857'
 N ST. GEORGE ST.
 PAGE ST.
 ALLEN ST.
 TILGHMAN ST.

REVISIONS:	AREA PLAN
AREA FOR ORDINANCE	
11TH WARD, CITY OF ALLENTOWN, LEHIGH COUNTY, PENNSYLVANIA	
SCALE: 1" = 200'	JOB #/NA
DATE: DECEMBER 4, 2019	
THE CITY OF ALLENTOWN, BUREAU OF ENGINEERING	
DEPARTMENT OF ENGINEERING	
641 S. 10TH ST., ALLENTOWN, PA 18103-3173 610-487-2724	

CITY OF ALLENTOWN



Map Date:
November 27, 2019

Proposed Area for New Ordinance

SCALE:
1" = 300'



CITY OF ALLENTOWN



Map Date:
November 27, 2019

Proposed Area for New Ordinance

SCALE:
1" = 300'

