

"The arc of the moral universe is long, but it bends toward Justice."

- Rev. Dr. Martin Luther King, Jr.

LEHIGH VALLEY JUSTICE INSTITUTE

EST 2020

Joseph Welsh, Executive Director
Victoria Wrigley, Chief Data Scientist

July 17, 2024

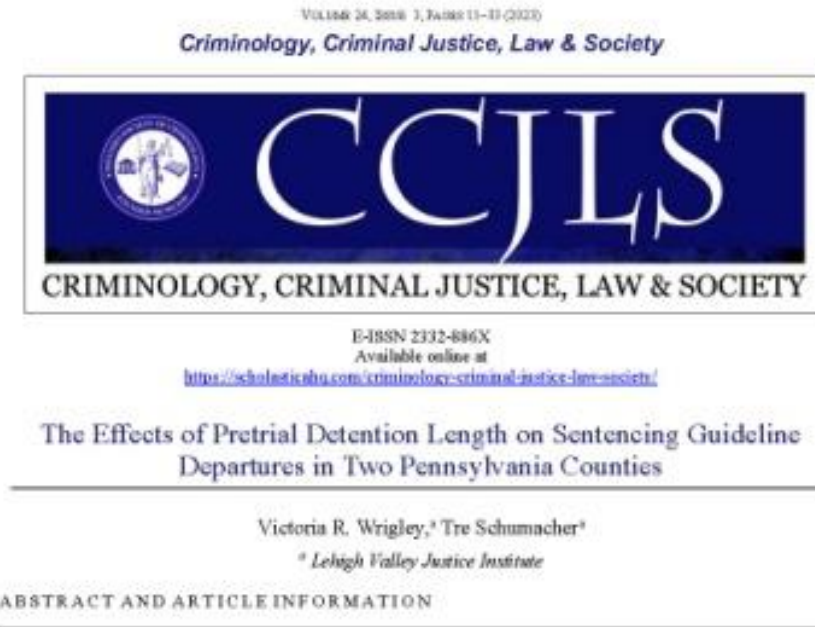
WHAT WE ARE

- Independent, non-partisan 501(c) public charity
- Study of Criminal Justice processes in Lehigh Valley
- Driven by Professional Staff – qualitative and quantitative researchers
- Aided by robust Internship program from Lehigh Valley schools
- Disciplined seasoned researchers and policy analysts



WHAT WE DO

- Work for better outcomes from justice system
- Rigorous academic research focused on real world issues
- Examine related Social Justice Issues
- Publish Academic peer-reviewed articles
- Public reports for normal people
- Advice and consultation with governmental and community officials and leaders
- Public outreach events, such as ReEntry Simulation



HOW WE DO IT

- Comprehensive Data Analysis
 - Document interrelationship of a multiplicity of factors
- Geospatial Analysis – our signature skill
 - Analyze impact on neighborhoods
 - Connect community demographics and program impact
- Policy Development – Data suggests local solutions



WHY DATA ANALYSIS?



Data Illuminates



Data Clarifies



Data Unites!

*Data and geospatial analysis
by independent professionals
shows the path forward for
better outcomes*

STAFF – THE ENGINE OF THE INSTITUTE



Nicole Levy

**Researcher/Admin
Internship Manager**



Victoria Wrigley

Chief Data Scientist



Timothy Loftus

Data Scientist



Kamal Bookwala

Consulting Economist



INSTITUTIONAL REVIEW BOARD (IRB)

- Our federally registered Institutional Review Board assures the highest Standard of Ethics in human subjects research
- Nationally and Internationally recognized Academic Leaders

- **Dr. Harrison Bailey**, Principal, Liberty High School
- **Dr. Mark Erickson**, Retired President NCC, Senior Director for International Development, Lehigh University
- **Antonia Fernandez**, Director of Community Outreach, NCC
- **Dave Harrington, Esq.**, immigration attorney, former Chair, Courts & Corrections Committee, Lehigh County Commissioners
- **Michelle Kott**, Chief, Bethlehem Police Department
- **Stephen Lanshe, Esq.**, Associate General Counsel, St Lukes University Health Network
- **Richard Master**, Unfinished Business Foundation, Business Leaders for Healthcare Transformation
- **Dr. William Schaffer**, Director, NCC Center for College and Career Readiness
- **Randy Uhler**, Former participant, Northampton County Mental Health Court and Probation system

ADVISORY COUNCIL — EXPERTISE FOR STAFF'S WORK

OVERSIGHT BOARD – COMPLIANCE WITH LAW & MISSION

- **Richard Master**, founder and Board member Emeritus
- **Marvin Boyer**, President
- **Berto Sicard, J.D.**, Vice President
- **Robert Walden**, Treasurer
- **Jose Rivera**, Secretary
- **Gary Asteak, Esq.**
- **Alexis Berg-Townsend, Esq.**
- **The Hon. Robert Freeman**
- **Charles Marcon**
- **Ross Marcus**
- **Luis Perez**
- **Dean Young**



CHIEF KOTT, BETHLEHEM PD



CITY OF BETHLEHEM

10 East Church Street, Bethlehem, Pennsylvania 18018-6025

April 12, 2024

Dear Grant Committee,

I am writing to express my enthusiastic support for the proposed study on police co-response being undertaken by the Lehigh Valley Justice Institute. As the Chief of Police at the city of Bethlehem Police Department, I have a vested interest in promoting evidence-based practices that enhance public safety and improve outcomes for communities.

The concept of police co-response, whereby mental health professionals or social workers accompany law enforcement officers on calls involving individuals in crisis, has gained increasing recognition as a promising approach to addressing complex societal issues. By

"I am overtly aware of the strong working relationship between the Bethlehem Police Department and Lehigh Valley Justice Institute . . . They are a trusted community resource for justice data and study."

"This study will not only inform policy and practice at the local level but also contribute to broader conversations about police reform and the delivery of mental health services nationwide."

WHAT PEOPLE ARE SAYING

SUSAN WILD, U.S. REPRESENTATIVE

SUSAN WILD
7TH DISTRICT, PENNSYLVANIA

COMMITTEE ON FOREIGN AFFAIRS
EUROPE, ENERGY, THE ENVIRONMENT
AND CYBER SUBCOMMITTEE

COMMITTEE ON EDUCATION AND
LABOR
HEALTH, EMPLOYMENT, LABOR AND
PENSIONS SUBCOMMITTEE

COMMITTEE ON SCIENCE, SPACE
AND TECHNOLOGY
RESEARCH AND TECHNOLOGY
SUBCOMMITTEE

COMMITTEE ON ETHICS



Congress of the United States
House of Representatives
Washington, DC 20515

May 8, 2024

WASHINGTON OFFICE
LONGWORTH HOUSE OFFICE BUILDING
ROOM 1027
WASHINGTON, DC 20515
(202) 225-6411

LEHIGH COUNTY OFFICE
504 HAMILTON ST. SUITE 3804
ALLENTOWN, PA 18101
(484) 781-6000

MONROE COUNTY OFFICE
637 MAIN ST. SUITE 316
STROUDSBURG, PA 18360
(570) 807-0333

NORTHAMPTON COUNTY OFFICE
400 NORTHAMPTON ST. SUITE 503
EASTON, PA 18042
(610) 333-1170

“The collection of this kind of data is necessary if we are to build evidence based models of response to mental health crises that can keep our community safe and help us avoid unjust criminalization of behavioral health challenges.”

Dr. Nancy La Vigne
Director
National Institute of Justice
U.S. Department of Justice

WHAT PEOPLE ARE SAYING

JACQUELINE ROMERO, U.S. ATTORNEY



Jacqueline C. Romero, United States Attorney
Direct Dial: (215) 861-8470
Facsimile: (215) 861-8618
E-mail Address: Jacqueline.Romero@usdoj.gov

U.S. Department of Justice

United States Attorney

Eastern District of Pennsylvania

615 Chestnut Street
Suite 1250
Philadelphia, PA 19106-4476
215-861-8200

April 30, 2024

Dr. Nancy La Vigne, Director
National Institute of Justice
U.S. Department of Justice
810 Seventh Street NW
Washington, DC 20531

RE: NIJ FY24 Research and Evaluation on 911, Alternative Hotlines, and Alternative

“The proposed study...could have a transformative impact on the criminal justice system...[it is] essential to understanding what works best to serve some of our most vulnerable citizens.”

“We look forward to continuing our close relationship with the Lehigh Valley Justice Institute.”

WHAT PEOPLE ARE SAYING

PROGRAM EVALUATION

Victoria Wrigley, Chief Data Scientist

You can't
manage
what you
can't
measure.



IMPORTANCE AND BENEFITS

Internally

- Assess impact and effectiveness
- Continuously make tweaks or improvements to implementation in real-time
- Demonstrate commitment to your officers' experiences
- Help inform decision-making

Externally

- Demonstrate commitment to accountability, transparency, and your residents' wellbeing
- Strengthen public opinion of your organization
- Use results to advocate or apply for funding

WHAT WE PROPOSE

Depends on the city's implementation plan, program goals, and budget

POSSIBLE FORMATS

Experimental Study

- Randomized Controlled Trial (RCT) or Quasi-Experiment
- Provides causal evidence of success
- Can perform statistical tests
- Most robust and rigorous investigation

Observational Study

- Describes outcomes, correlations, and distributions
- Causal conclusions cannot be drawn
- Can perform statistical tests
- Can inform future directions of research

Best Practices Research

- Literature review on other co-responder models and their barriers/facilitators of success
- Can help Allentown prepare the program to avoid common pitfalls and incorporate best practices
- Useful before initial rollout

DEFINING “SUCCESS”

Immediate

- Time to arrive on scene
- Arrest rates
- Use-of-force rates
- Connection to community services
- Disparities in use or outcomes by demographics, including location

Long-Term

- User/family/public perceptions and approval
- Barriers to implementation and officer perceptions and approval
- Follow-up rates of arrest, emergency department use, services enrollment
- Cost/benefit analysis

RECOMMENDED PROJECT

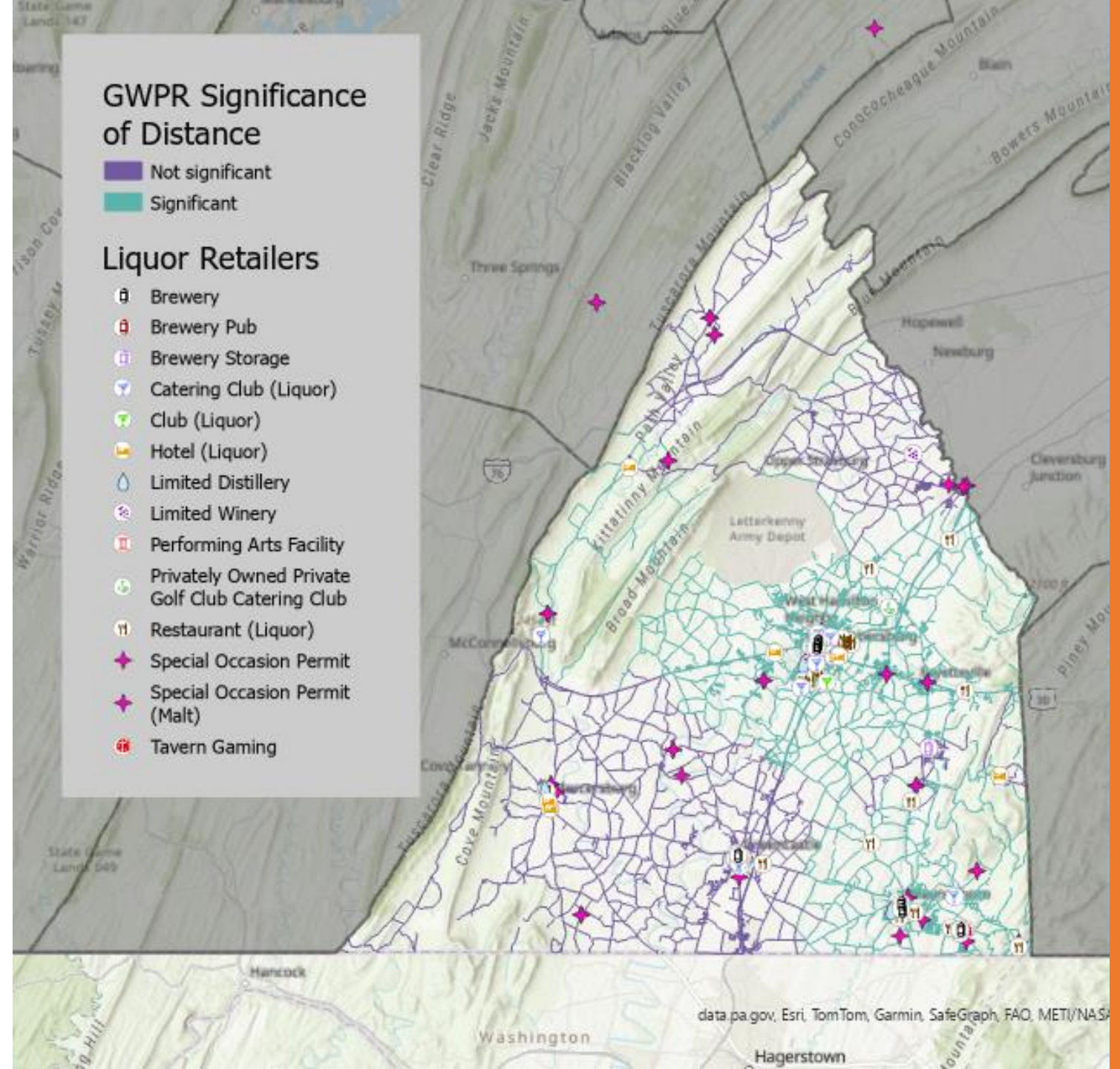
Initial mixed-methods rollout analysis

- Pre-program
 - Descriptive analysis to assess the “before” state
- Present-program
 - Quantify implementation barriers to make immediate improvements
 - RCT or quasi-experiment to gain causal evidence of success
 - Cost-benefit analysis

Regular “checkup” analyses

- Track program goals
- Continually assess weaknesses, successes, and perceptions to make improvement
- Advocate for funding

EXAMPLE





THANK YOU

We are happy to answer any questions.

We look forward to working with the city!